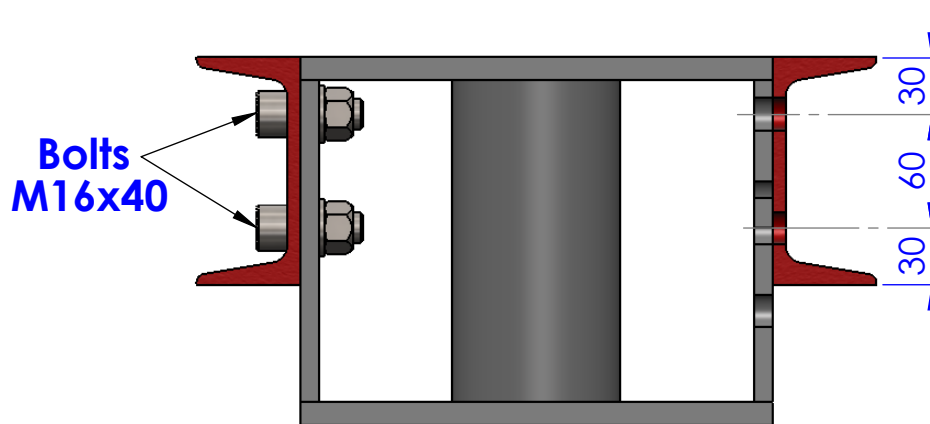
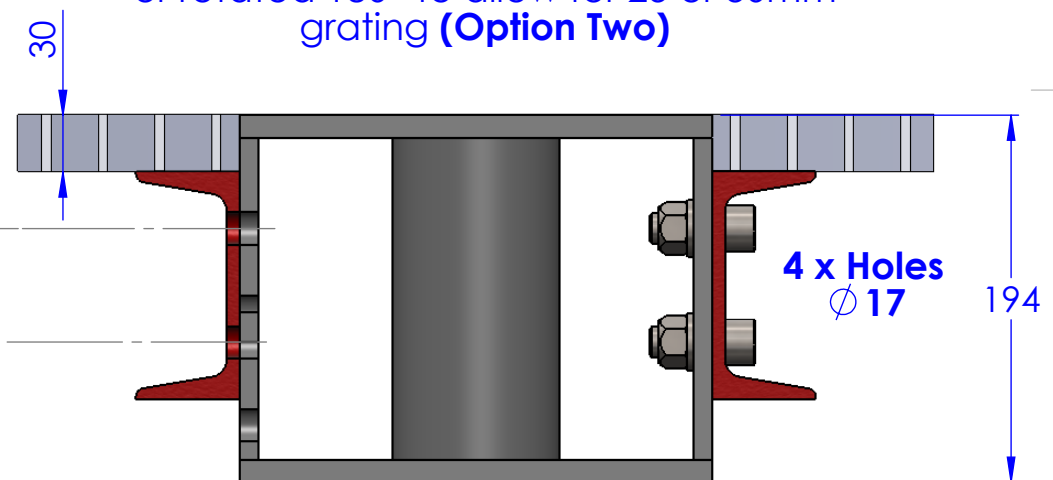


MOUNT OPTIONS

Hole pattern facilitates bridge mount to be fitted flush (**Option One**) or rotated 180° to allow for 25 or 30mm grating (**Option Two**)



Mount Option One



Mount Option Two

DO NOT SCALE DRAWING

REVISION



Reid Lifting Limited, Unit 1, Severlink,
Newhouse Farm, Ind Est, Chepstow,
Monmouth, NP16 6UN, UK

Tel +44(0) 1291 620796
Fax +44(0) 1291 626 490
enquiries@reidlifting.com

DRAWN	NAME	DATE	FINISH:
CHK'D	C.MEEK-WELSH	24/09/2014	Natural
APPV'D			MATERIAL:
ALL COPYRIGHT AND DESIGN RIGHT SUBSISTING IN THIS DOCUMENT IS THE PROPERTY OF REID LIFTING LIMITED AND MAY NOT BE REPRODUCED WITHOUT REID LIFTING'S CONSENT. THIS DOCUMENT AND THE INFORMATION CONTAINED WITHIN IT IS CONFIDENTIAL AND MAY NOT BE DISCLOSED TO ANY THIRD PARTY NOR USED FOR ANY UNAUTHORISED PURPOSE WITHOUT REID LIFTING'S CONSENT			
UNLESS OTHERWISE SPECIFIED: DIMENSIONS ARE IN MILLIMETERS GENERAL MACHINING TOLERANCES ± 0.10 mm GENERAL FABRICATION TOLERANCES ± 1.00 mm DEBUR AND BREAK SHARP EDGES			



TITLE: **Bridge Mount Socket
General Arrangement
(Flush & Grating)**

DWG NO.	SBMG0500	A4
Weight:	SCALE: 1:4	SHEET 1 OF 1